

Washougal Community Library

Donor Opportunities



FVRLibraries
PORT VANCOUVER REGIONAL LIBRARIES



PROJECT VISION

To create a library that is welcoming, cozy, and inspirational. A library that strengthens the downtown experience of Washougal and reflects its climate, landscape, and culture, while remaining flexible to the future needs and aspirations of the community.

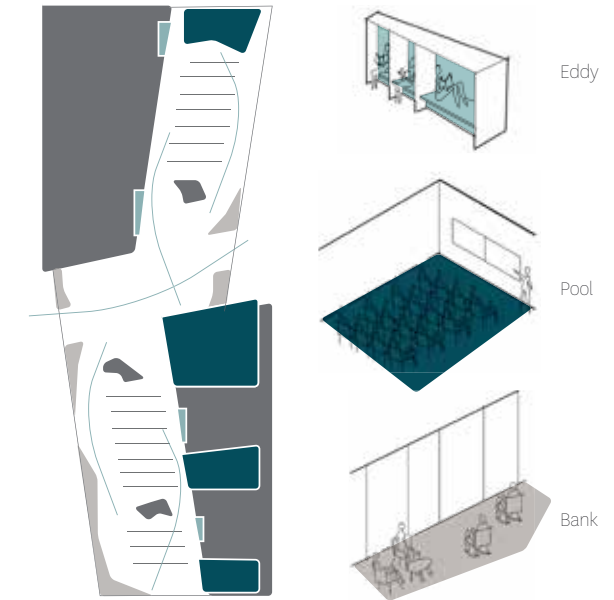
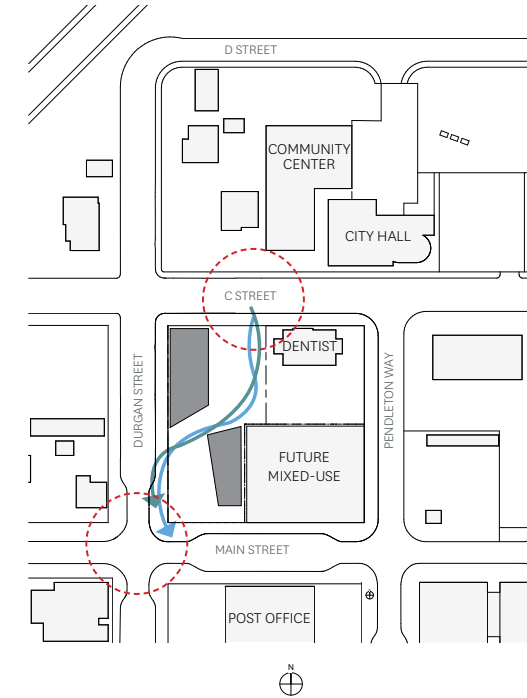
The Washougal and Columbia Rivers and the landscapes they carve are honored and embraced by the community through recreation, industry, and preservation. The new Washougal Community Library strives to uphold this legacy by supporting its natural setting and spotlighting the culture and history of Washougal.

Cover: Exterior View, Corner of Durgan and Main Streets

Design Program and Renderings by Hacker | Landscape Architecture by PLACE



HACKER PLACE



WATER SHAPES THE COMMUNITY

Through form and materials, the 13,000 square foot library fits comfortably into its context, contributing to the vibrancy of Downtown Washougal. The building has two prominent entries accessible from opposite corners, one from Main Street and one through a courtyard positioned at C Street across from City Hall. These entries influence the form of the building, creating a flowing, river-like connection from the exterior of the building through the central lobby, welcoming patrons from both sides.



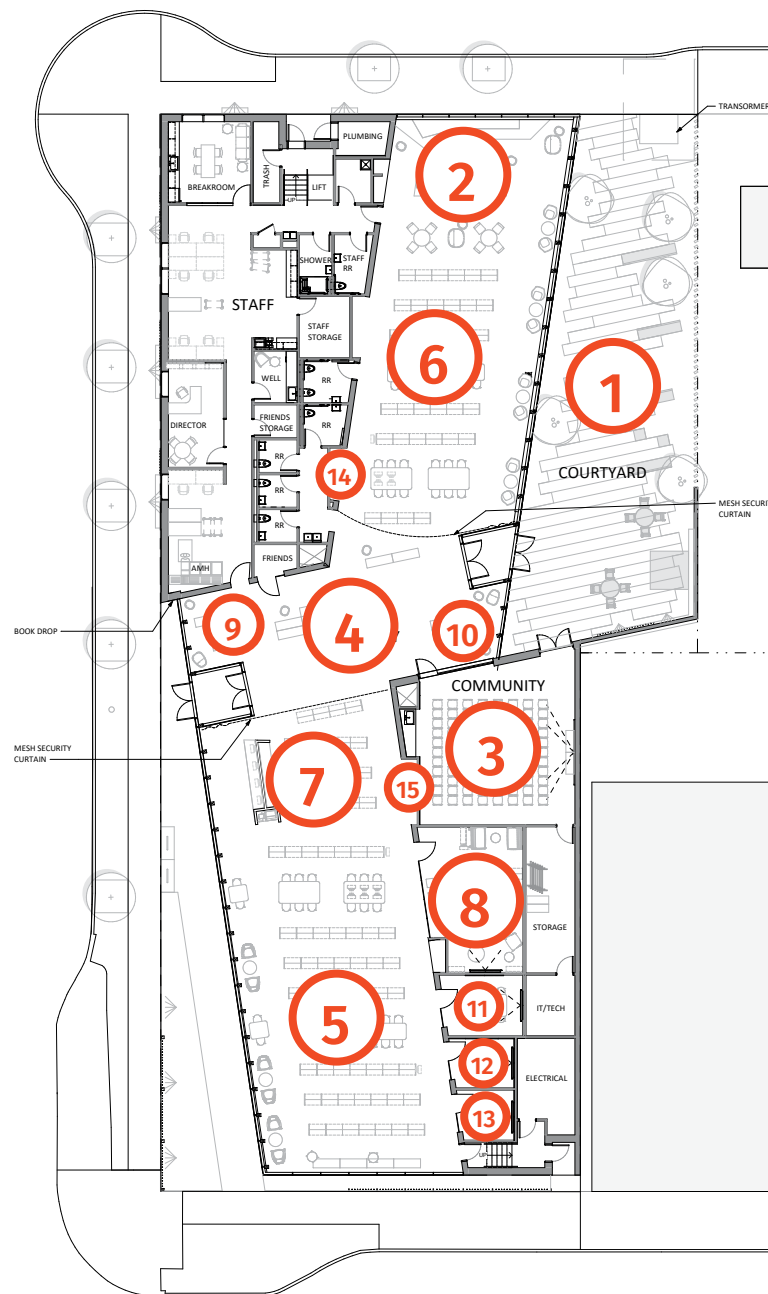
Top: Interior View, Lobby Facing South toward Main Street

Bottom: Exterior View, Facing East from Durgan Street





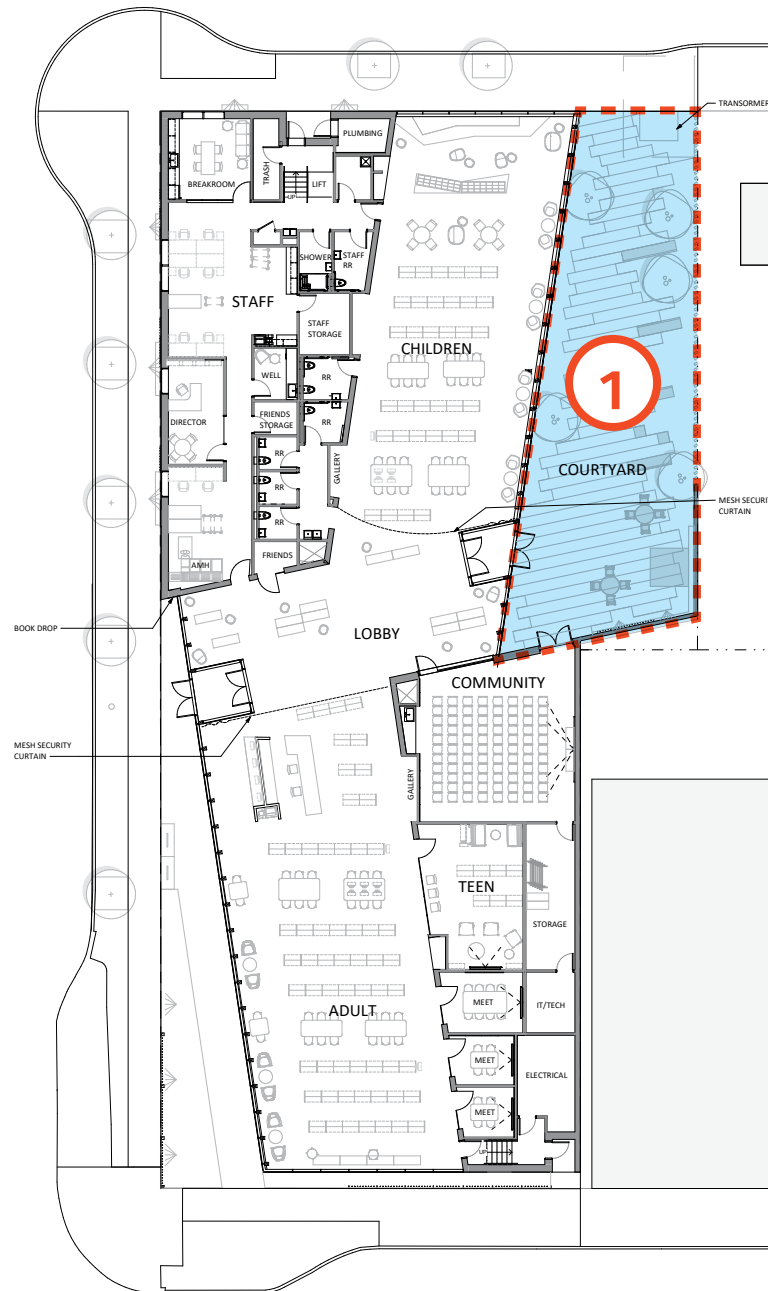
Lobby + Service Desk



Donor Opportunities

These donor opportunities present a unique chance for individuals, families, and businesses to write a chapter in the history of Washougal. Through these gifts, you become a part of the Washougal Community Library's legacy for generations to come.

- | | | | |
|---|---------------------------|----|--------------------------|
| 1 | Courtyard | 9 | Lobby Seating Area, West |
| 2 | Children's Storytime Area | 10 | Lobby Seating Area, East |
| 3 | Community Room | 11 | Conference Room |
| 4 | Main Lobby | 12 | Study Room, North |
| 5 | Adult Area | 13 | Study Room, South |
| 6 | Children's Area | 14 | Children's Reading Nook |
| 7 | Service Desk | 15 | Gallery Nook |
| 8 | Teen Room | | |



1 Courtyard

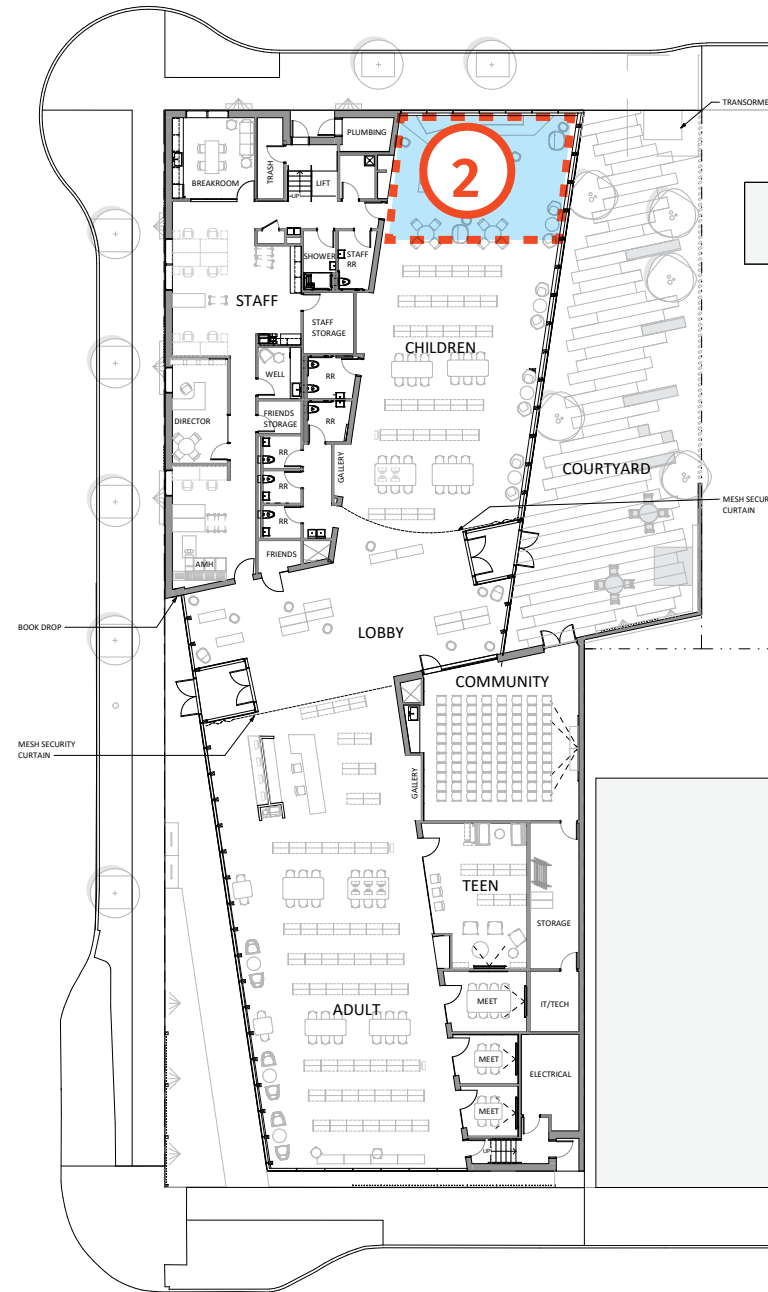
VALUE: \$263,000
2,750 SQFT

AREA INCLUDES:

- Plantings
- Pavings
- Wall Material and Screen
- Furniture
- Water Feature
- Exterior Lighting
- Educational Signage

The courtyard space is multi-use for activities such as Library programs, gatherings, or reading and is accessible year round for functions due to a removable canopy.

For more information contact Rick Smithrud at + 360-906-4705, rsmithrud@fvrl.org or Judy Musa at + 360-906-4703, jmusa@fvrl.org.



2

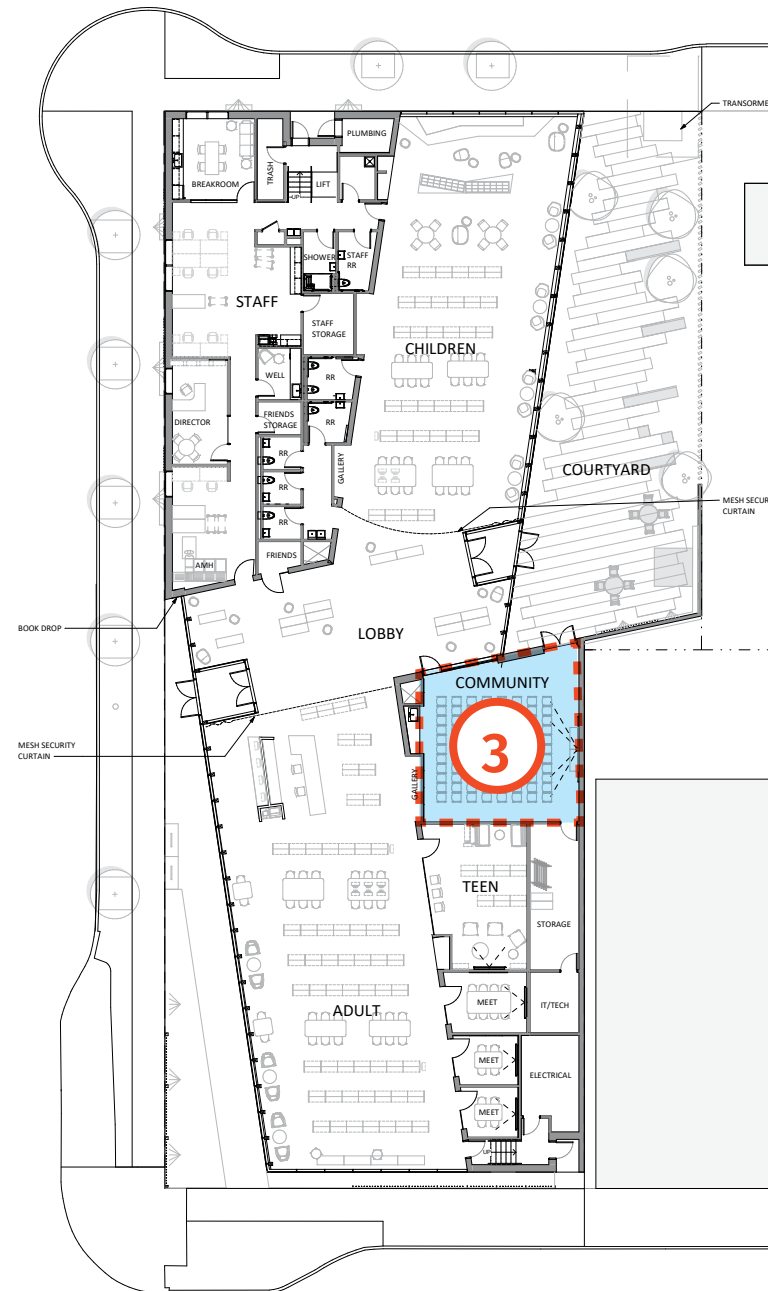
Children's Storytime Area

VALUE: \$162,000
950 SQFT

AREA INCLUDES:

- Furniture
- Carpet
- Acoustic Material
- Hanging Acoustic Sculpture
- Lighting

For more information contact Rick Smithrud at + 360-906-4705, rsmithrud@fvrl.org or Judy Musa at + 360-906-4703, jmusa@fvrl.org.



3

Community Room

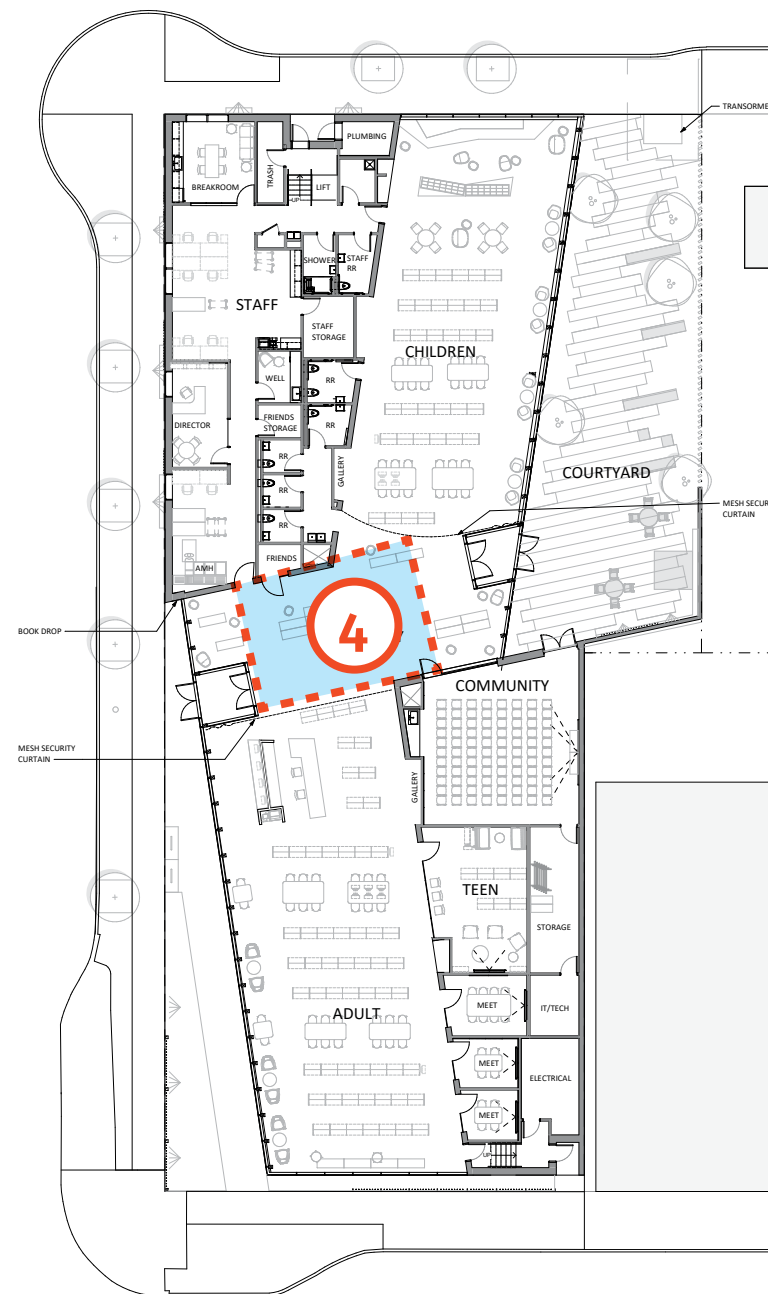
VALUE: \$161,000
980 SQFT

AREA INCLUDES:

- Furniture
- Lighting
- Acoustic Material + Ceiling
- Kitchenette
- Audio Visual Equipment + Hearing Loop
- Carpet
- Art Hanging System

The design of the interior embraces the notion of what the surrounding rivers have shaped — the community of Washougal.

For more information contact Rick Smithrud at + 360-906-4705, rsmithrud@fvrl.org or Judy Musa at + 360-906-4703, jmusa@fvrl.org.



4

Main Lobby

VALUE: \$108,000
1,050 SQFT

AREA INCLUDES:

- Furniture
- Lighting
- Acoustic Material
- Metal Security Curtains
- Display Shelves

Aegean tones, dark wood accents, rough and polished masonry, glistening accents, fluid pattern and texture will be used in combination to emulate the dynamic relationship between water and landscape, specific to the unique traits of the Washougal River.

For more information contact Rick Smithrud at + 360-906-4705, rsmithrud@fvrl.org or Judy Musa at + 360-906-4703, jmusa@fvrl.org.

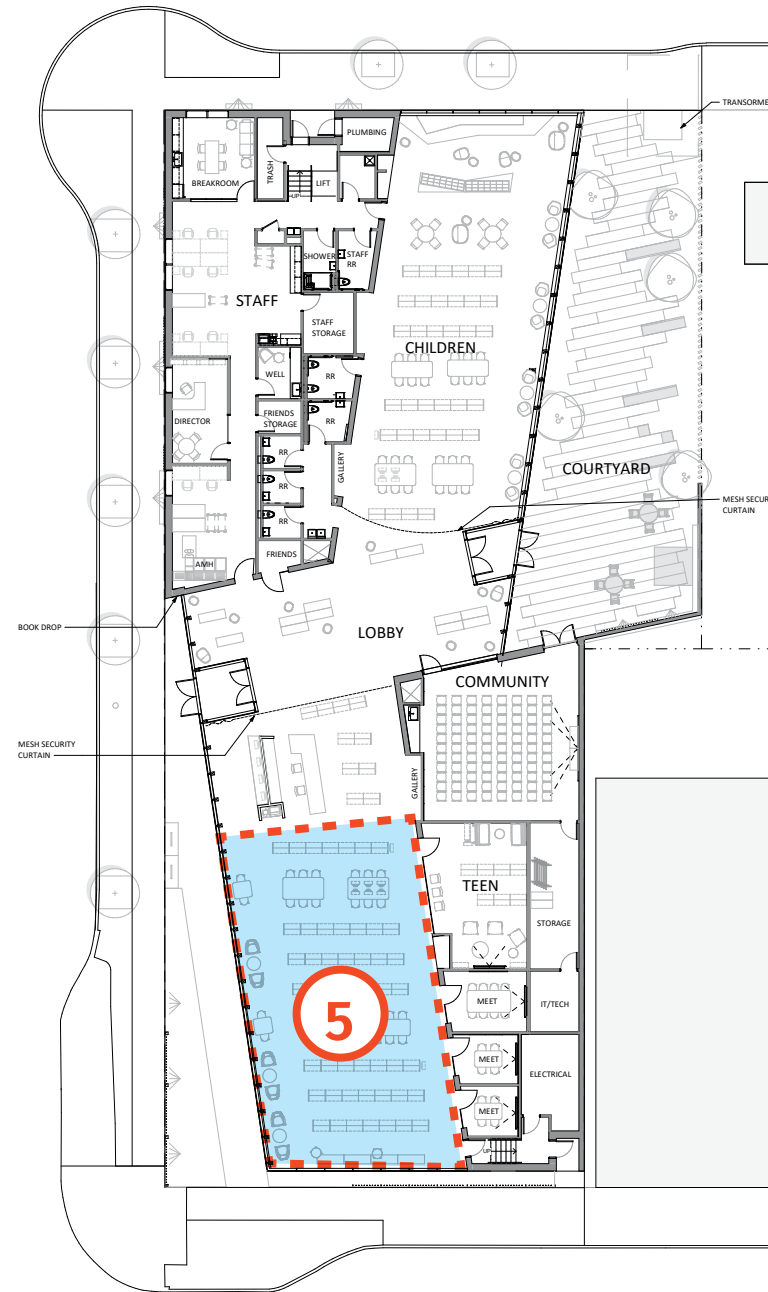


FVRLibraries
FORT VANCOUVER REGIONAL LIBRARIES



FORT VANCOUVER REGIONAL LIBRARIES

Adult Area



5

Adult Area

VALUE: \$97,000
2,400 SQFT

AREA INCLUDES:

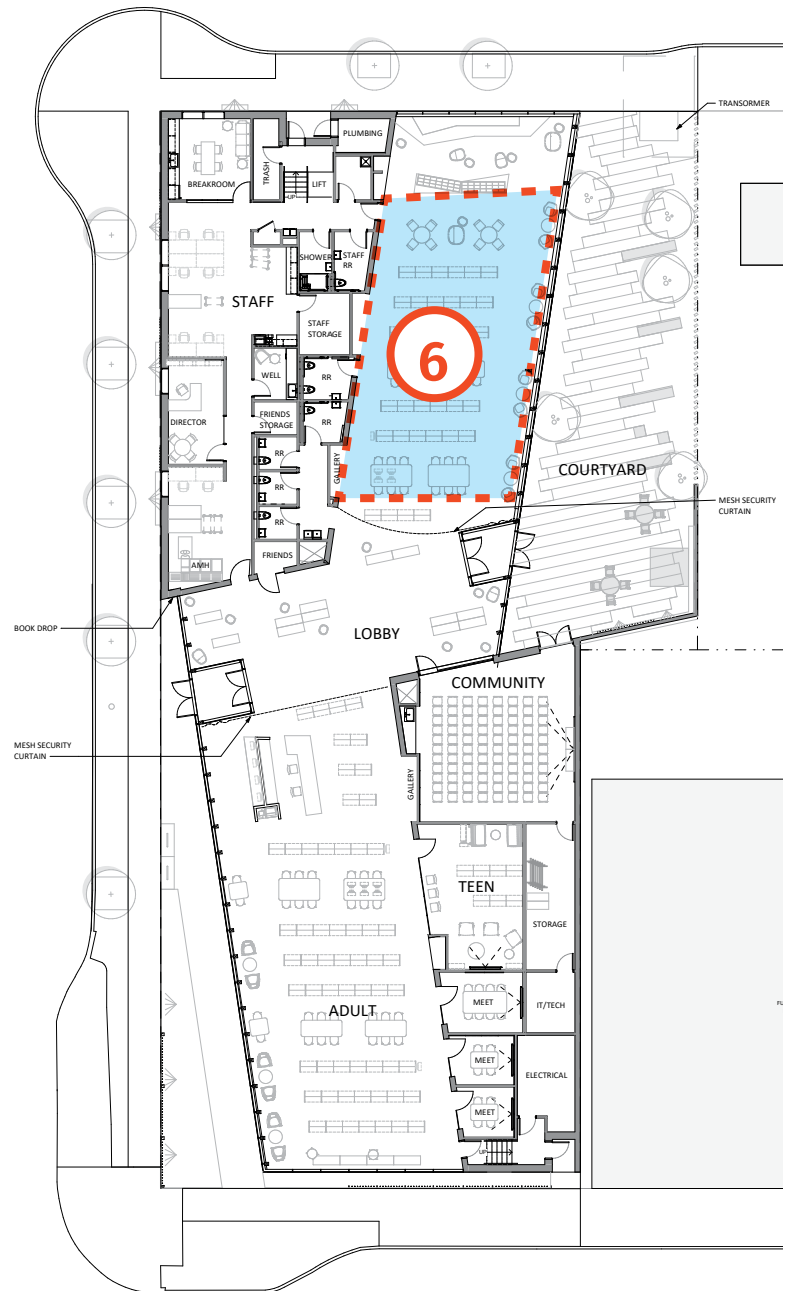
- Furniture
- Lighting
- Carpet
- Roller Shades
- Acoustic Material
- Shelving

For more information contact Rick Smithrud at + 360-906-4705, rsmithrud@fvrl.org or Judy Musa at + 360-906-4703, jmusa@fvrl.org.

WASHOUGAL COMMUNITY LIBRARY



Children's Area



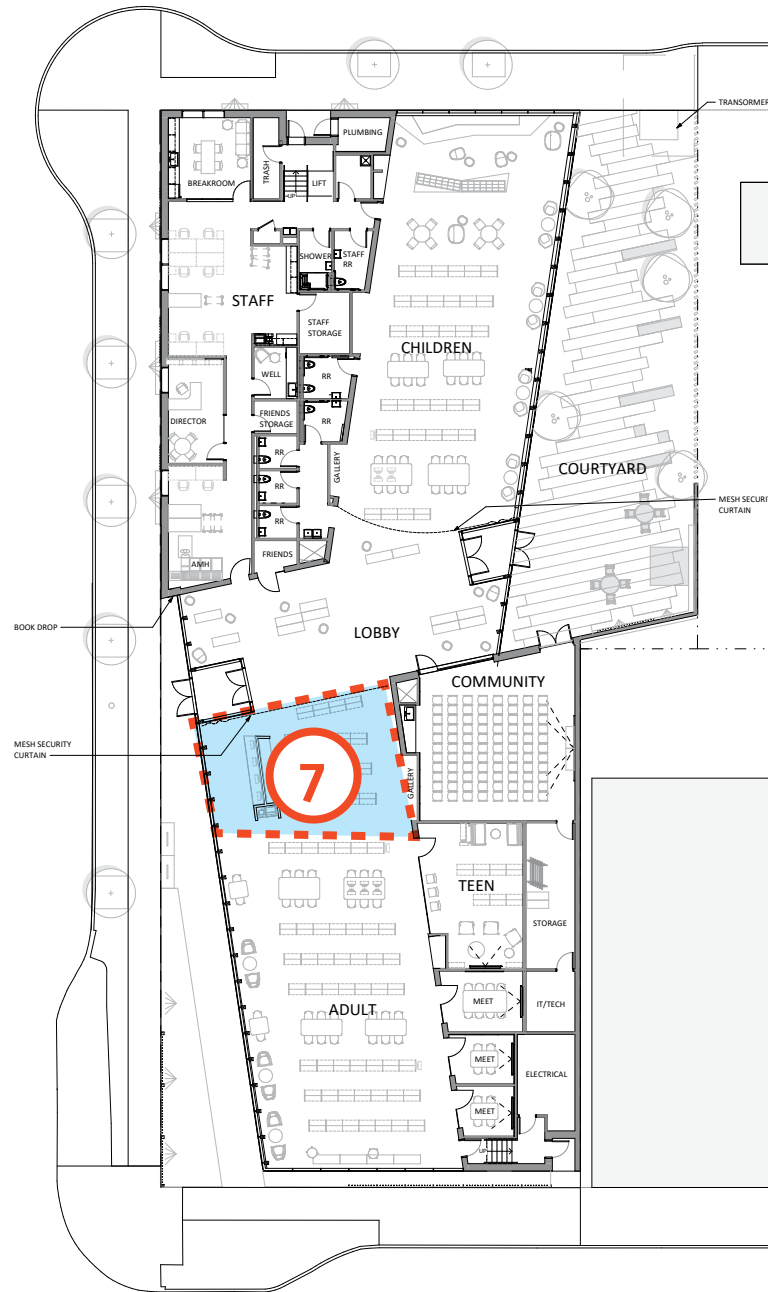
6 Children's Area

VALUE: \$96,000
2,050 SQFT

AREA INCLUDES:

- Furniture
- Carpet
- Acoustic Material
- Lighting
- Shelving

For more information contact Rick Smithrud at + 360-906-4705, rsmithrud@fvrl.org or Judy Musa at + 360-906-4703, jmusa@fvrl.org.



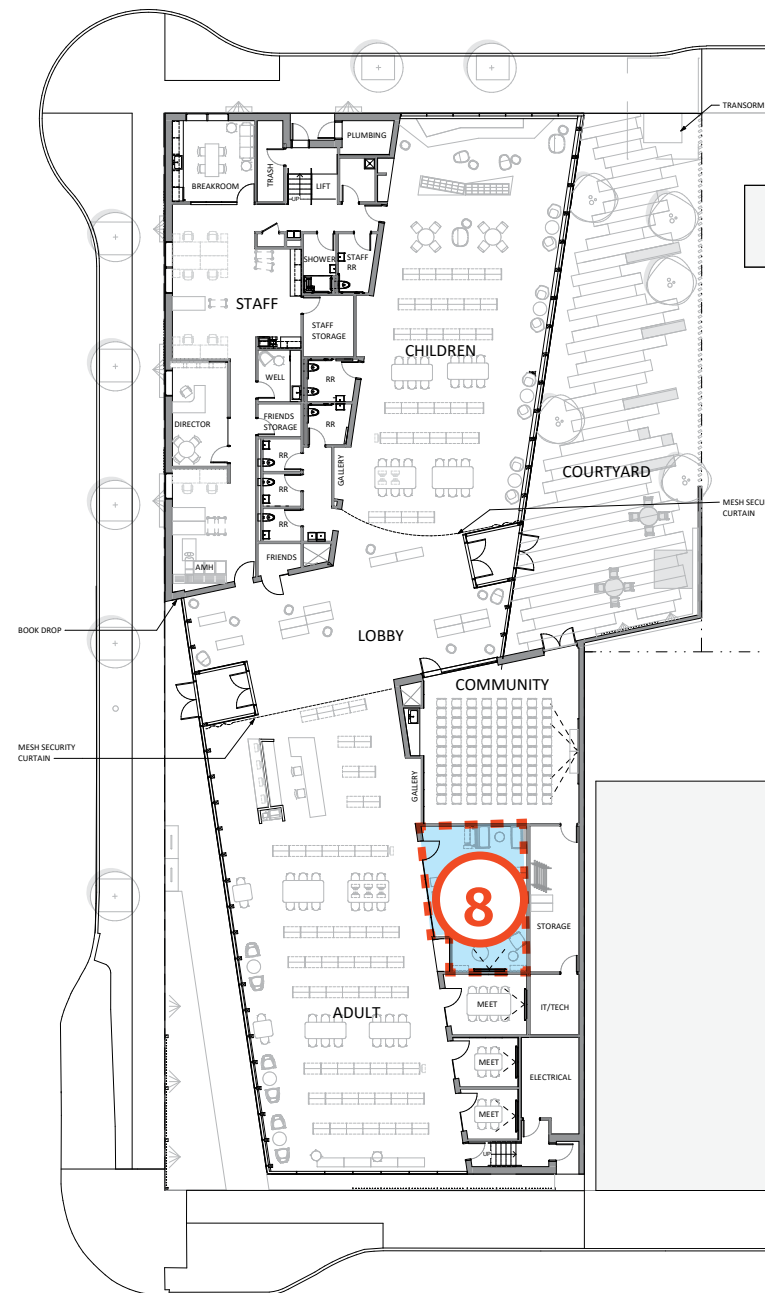
7 Service Desk

VALUE: \$77,000
900 SQFT

AREA INCLUDES:

- Furniture
- Lighting
- Carpet

For more information contact Rick Smithrud at + 360-906-4705, rsmithrud@fvrl.org or Judy Musa at + 360-906-4703, jmusa@fvrl.org.



8

Teen Room

VALUE: \$71,000
520 SQFT

AREA INCLUDES:

- Furniture
- Carpet
- Audio Visual Equipment + Projector and Screen
- Lighting
- Acoustic Material + Ceiling
- Shelving

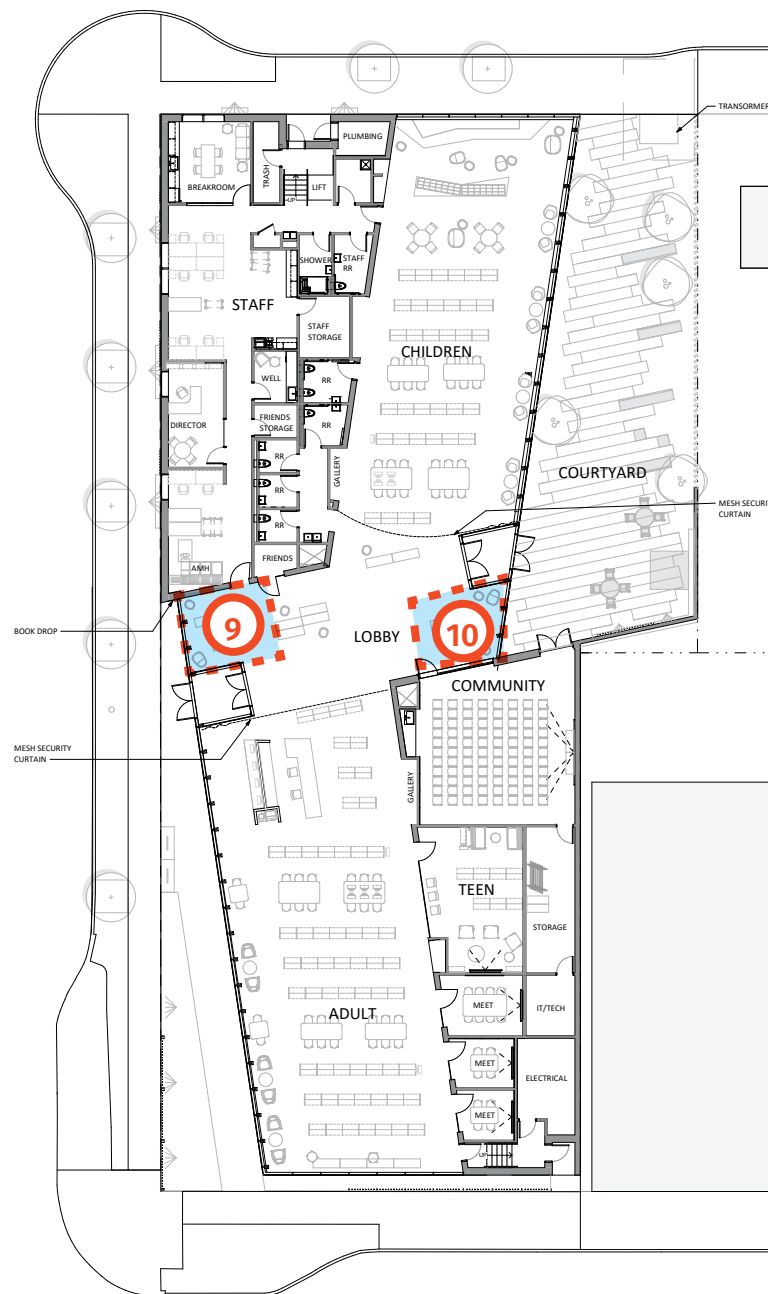
*For more information contact Rick Smithrud at + 360-906-4705,
 rsmithrud@fvrl.org or Judy Musa at + 360-906-4703, jmusa@fvrl.org.*



Lobby Seating Area, West



Lobby Seating Area, East



9
Lobby Seating Area, West

VALUE: \$34,000 | 230 SQFT

10
Lobby Seating Area, East

VALUE: \$34,000 | 260 SQFT

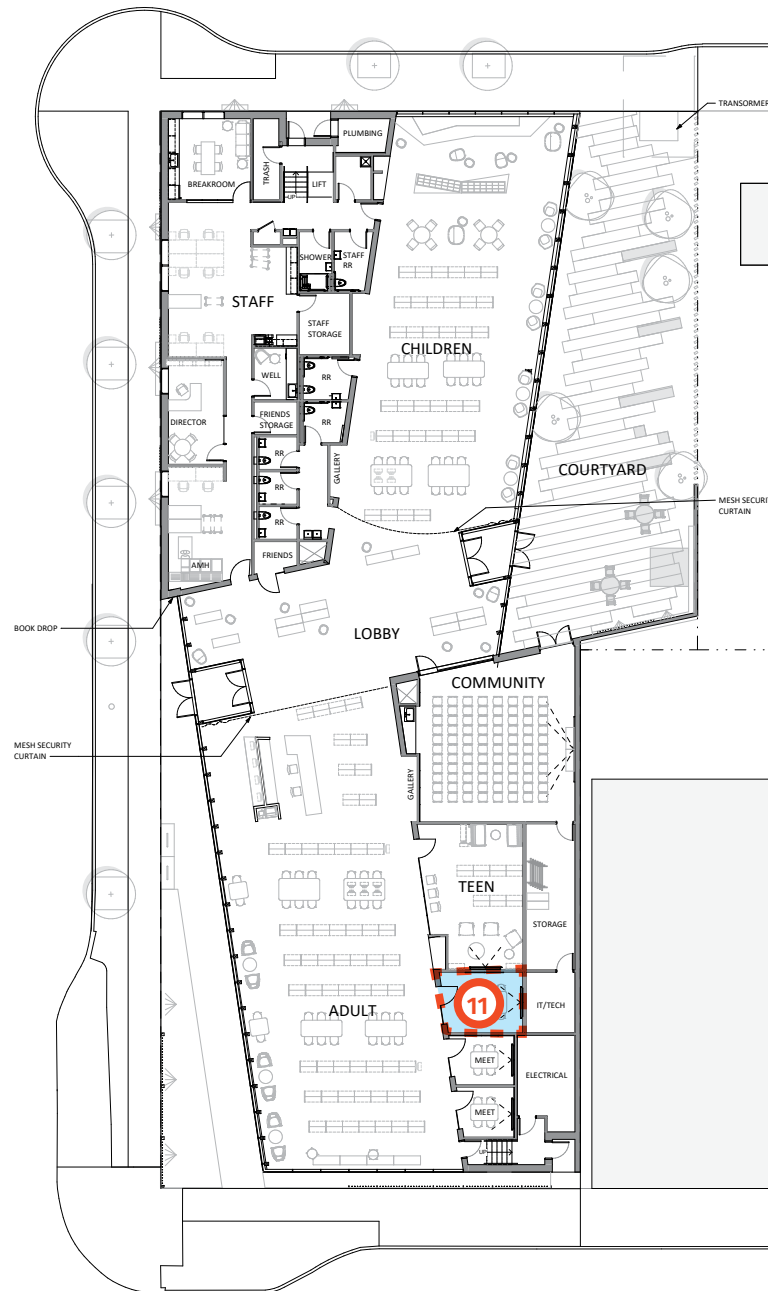
EACH AREA INCLUDES:

- Furniture
- Lighting
- Acoustic Material

For more information contact Rick Smithrud at + 360-906-4705, rsmithrud@fvrl.org or Judy Musa at + 360-906-4703, jmusa@fvrl.org.



Conference Room



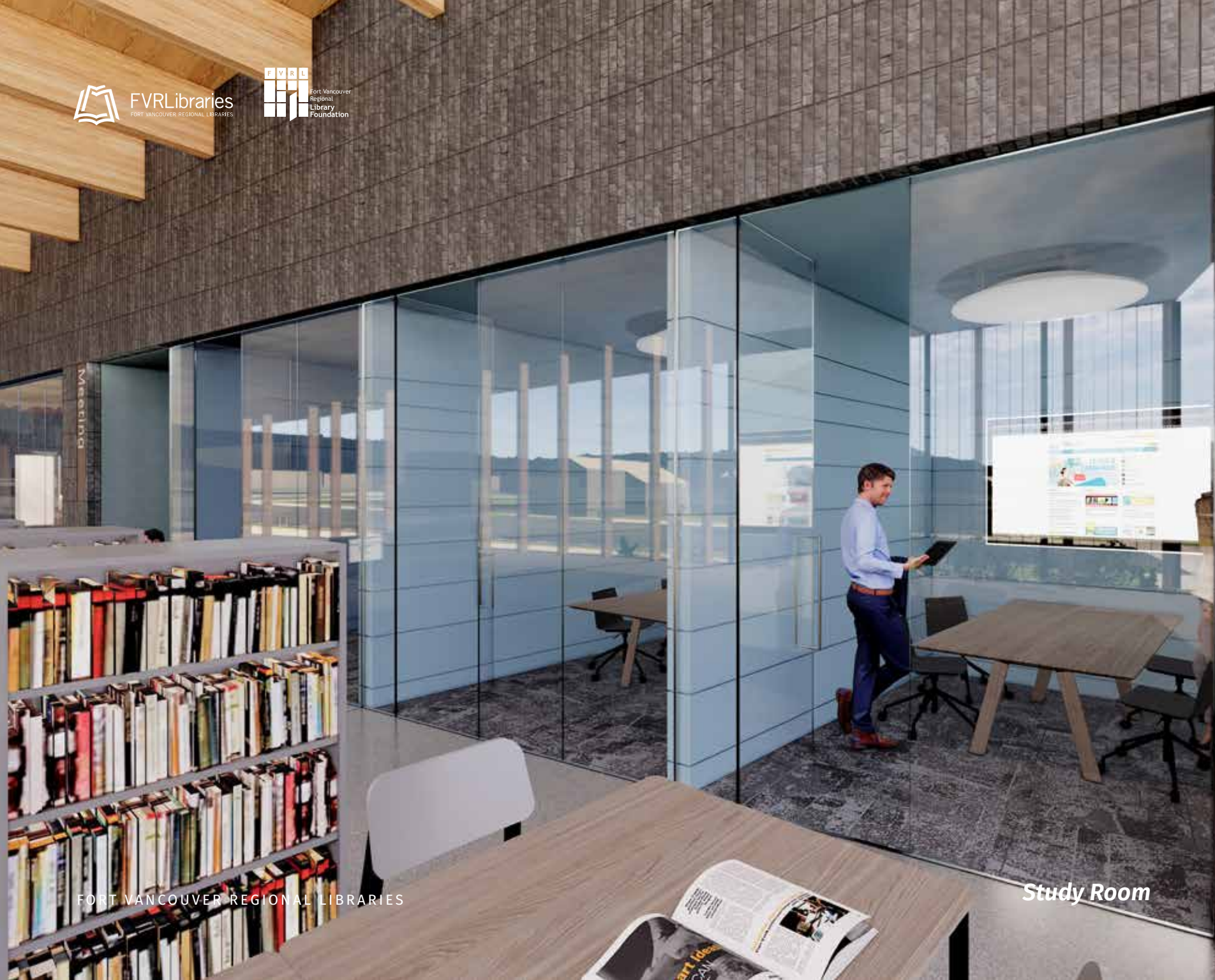
11 Conference Room

VALUE: \$30,000
200 SQFT

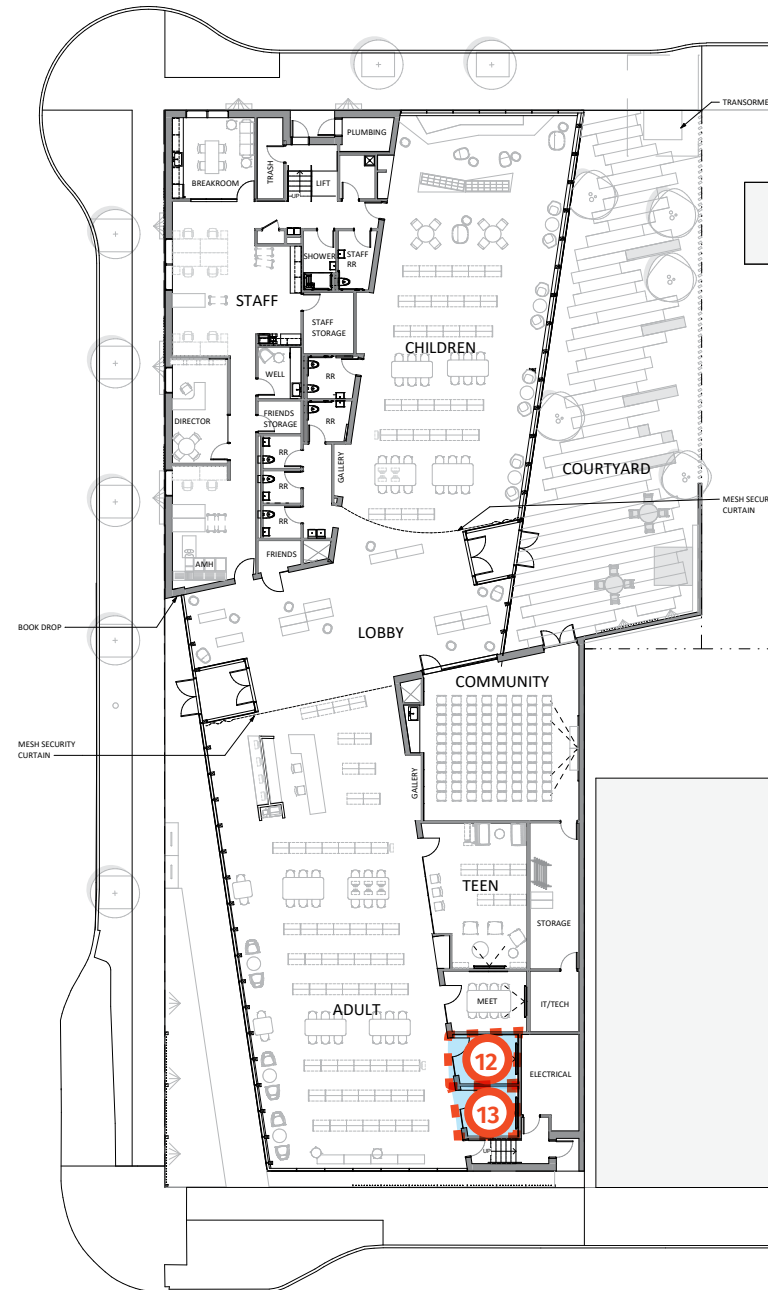
AREA INCLUDES:

- Furniture
- Carpet
- Audio Visual Equipment
- Lighting
- Acoustic Material
- White Board

For more information contact Rick Smithrud at + 360-906-4705, rsmithrud@fvrl.org or Judy Musa at + 360-906-4703, jmusa@fvrl.org.



Study Room



12 Study Room, North

VALUE: \$23,000 | 125 SQFT

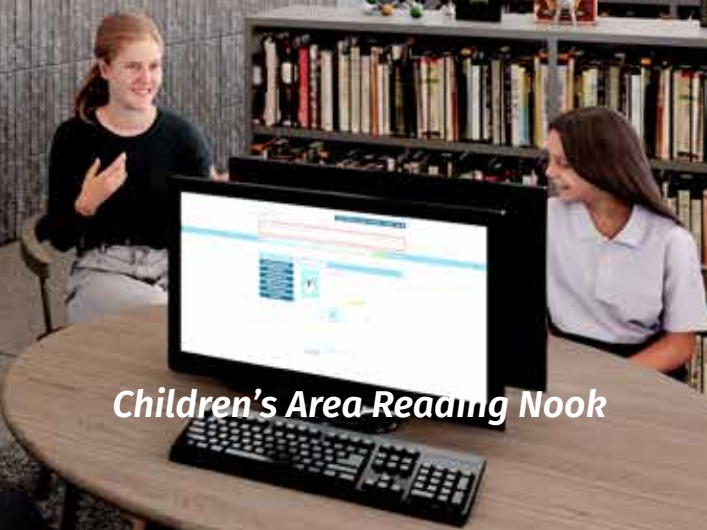
13 Study Room, South

VALUE: \$22,000 | 115 SQFT

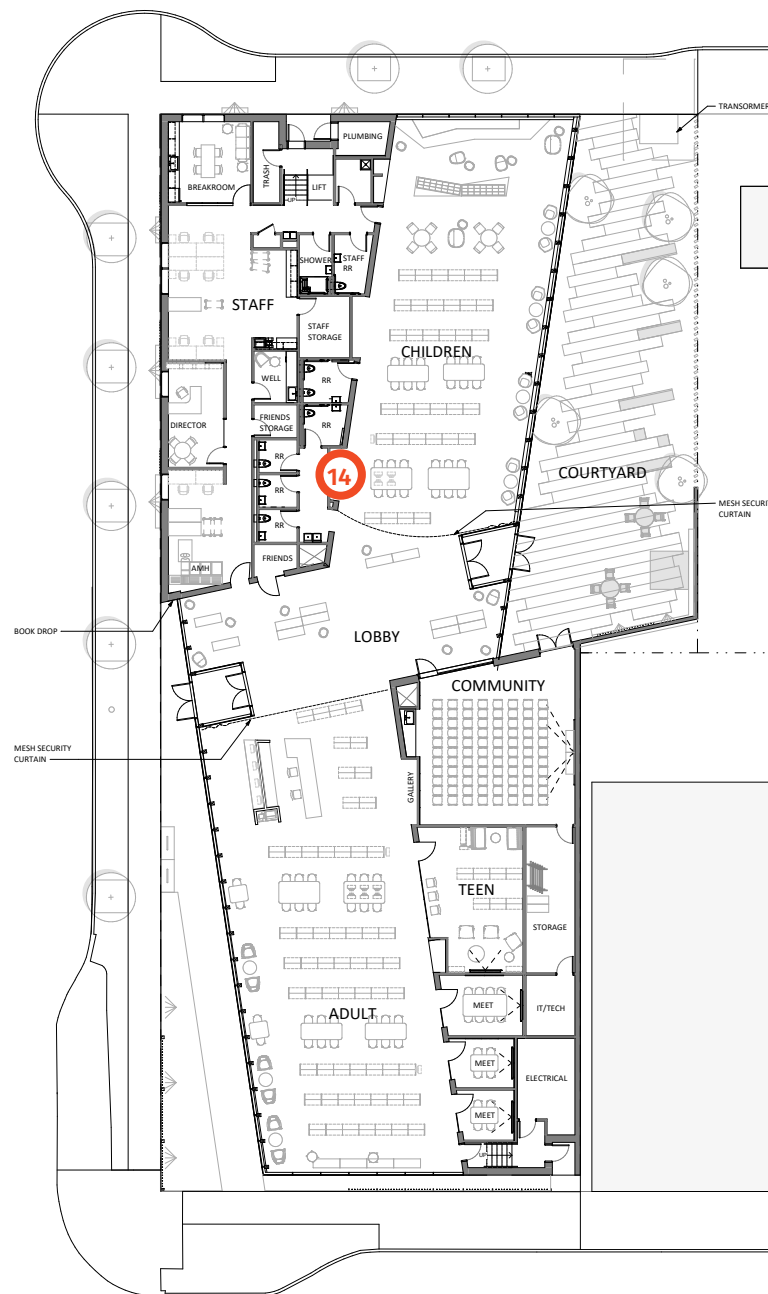
EACH AREA INCLUDES:

- Furniture
- Carpet
- Audio Visual Equipment
- Lighting
- Acoustic Material

For more information contact Rick Smithrud at + 360-906-4705, rsmithrud@fvrl.org or Judy Musa at + 360-906-4703, jmusa@fvrl.org.



Children's Area Reading Nook



14

Children's Area Reading Nook

VALUE: \$3,000
30 SQFT

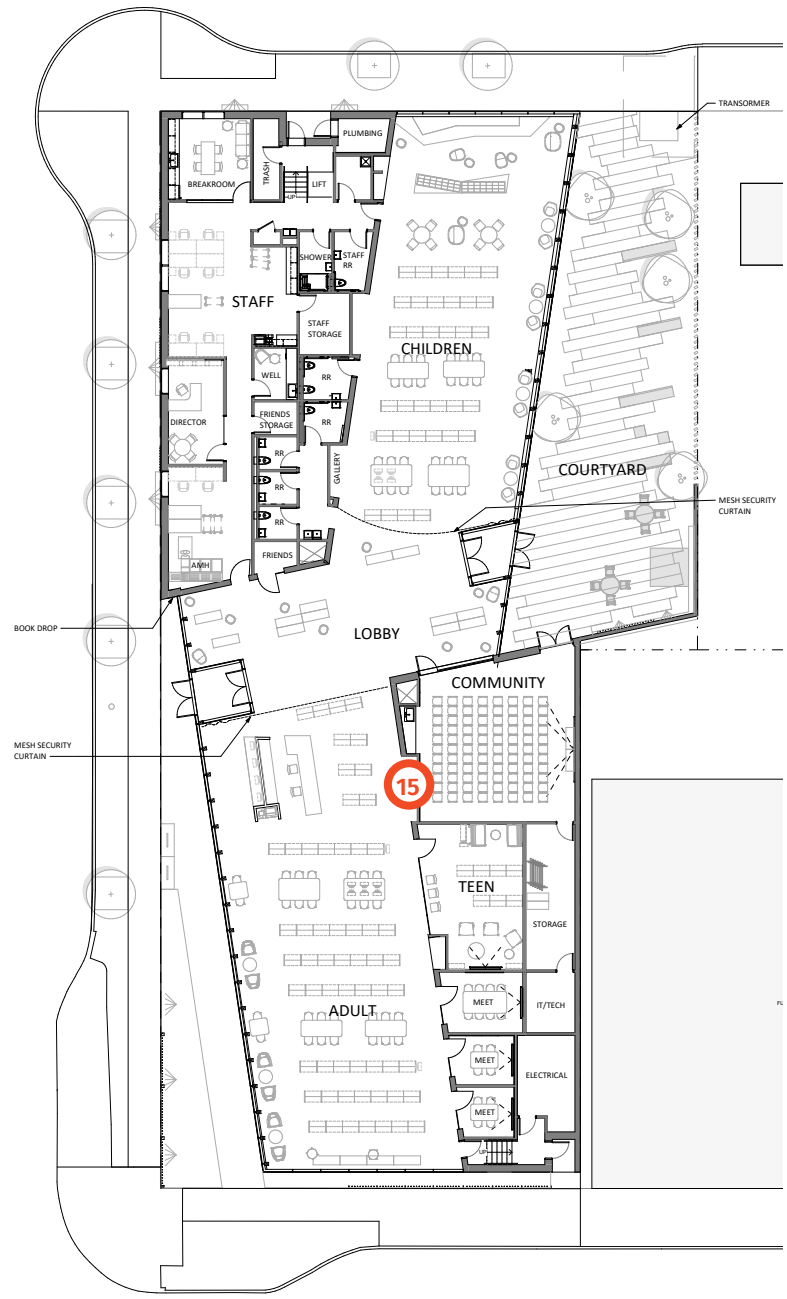
AREA INCLUDES:

- Lighting
- Art Hanging System

For more information contact Rick Smithrud at + 360-906-4705, rsmithrud@fvrl.org or Judy Musa at + 360-906-4703, jmusa@fvrl.org.



Gallery Nook



15
Gallery Nook

VALUE: \$3,000
35 SQFT

- AREA INCLUDES:
- Lighting
 - Art Hanging System

For more information contact Rick Smithrud at + 360-906-4705, rsmithrud@fvrl.org or Judy Musa at + 360-906-4703, jmusa@fvrl.org.



Form

Carved Pools
Eroded Edges



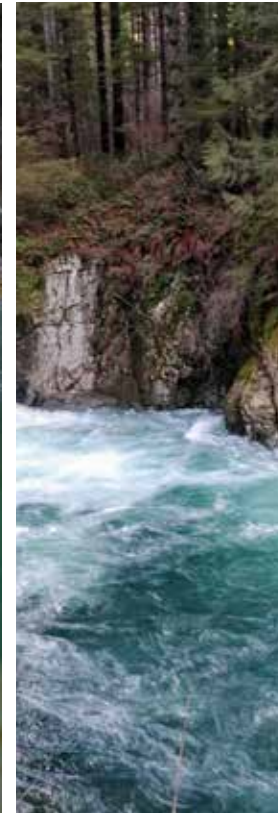
Texture

Tumbled Faces
Smooth Corners



Color

Blue-Green Pools
Basalt Borders
Dark Wood Accents



Pattern

In Motion
Non-rhythmic



Light

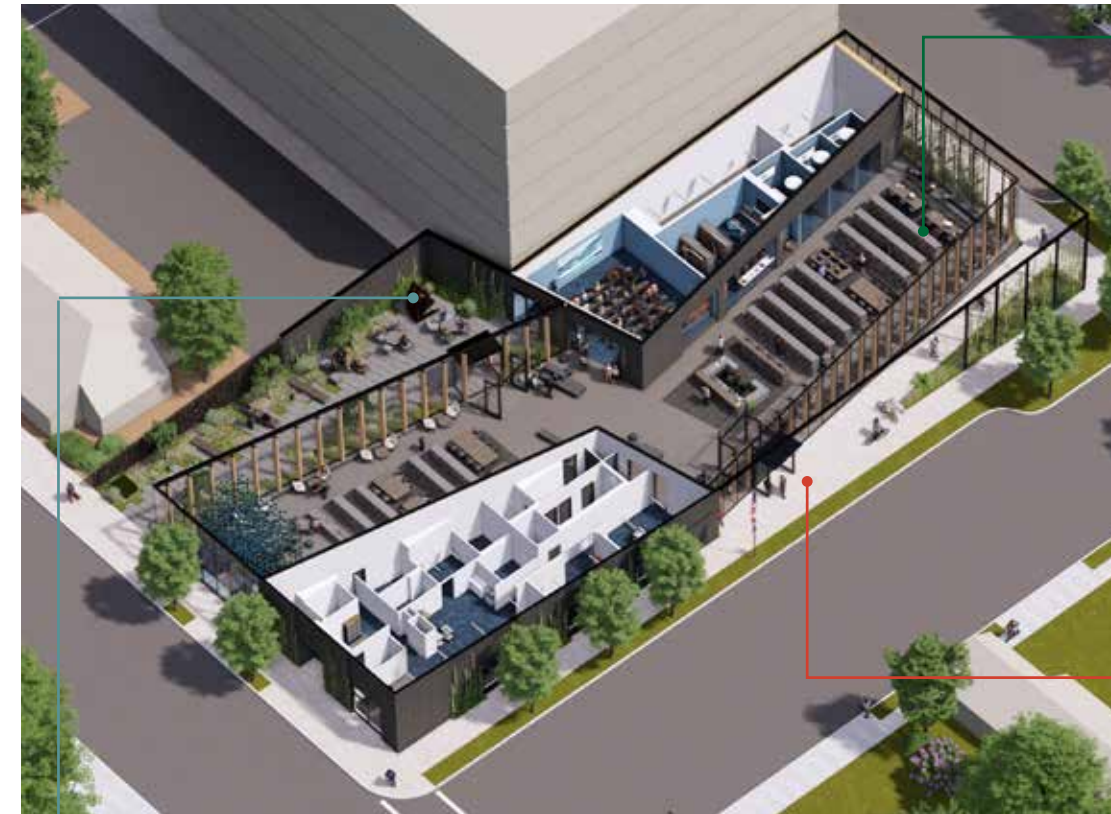
Meandering Highlights



Health

Simple Maintenance
No Aquatic Toxins

A library inspired by the landscape and community it serves.



MASS TIMBER STRUCTURE
+Wood timber structure to reduce carbon footprint and draw on local Washington industries.



ENERGY REDUCTION STRATEGIES
+High-efficiency radiant floor heating and cooling throughout main public areas.
+ High-efficiency building envelope reduces energy use for heating and cooling.
+The building is designed to accommodate the potential of future photovoltaic panels for lower energy costs.



ALTERNATIVE TRANSPORTATION
On-site bike parking.



AIR QUALITY
+ Ventilation air system provides natural cooling in addition to removing air contaminants from occupant spaces making it a healthier building environment.
+ Low VOC paints, adhesives, and carpets used for improved indoor air quality.



LANDSCAPE DESIGN AND EDUCATION
+Ecology-based native plant landscaping to reduce site irrigation and provide pollinator-friendly plantings.
+Landscape design provides educational opportunities.



SOLAR EXPOSURE
+The building is designed to optimize daylight and reduce need for electrical lighting.



STORMWATER MANAGEMENT
+On-site stormwater collection nourishes native habitat and eliminates water runoff.

THANK YOU FOR YOUR CONSIDERATION

We are excited to move the Washougal Community Library project forward and need your help. Our community believes in the value of literacy and understands that a public library is a critical component of its success. Your support will provide countless opportunities for readers of all ages to explore, discover, connect, and experience the programs and services this library can offer. We appreciate your interest in helping achieve a welcoming and sustainable new library for the Washougal community. Your donation is a gift to the entire community of Washougal, Washington.

*If you have any questions
or would like more information
please contact
Rick Smithrud at + 360-906-4705,
rsmithrud@fvrl.org or
Judy Musa at + 360-906-4703,
jmusa@fvrl.org.*

fvrlfoundation.org



FVRLibraries
FORT VANCOUVER REGIONAL LIBRARIES

